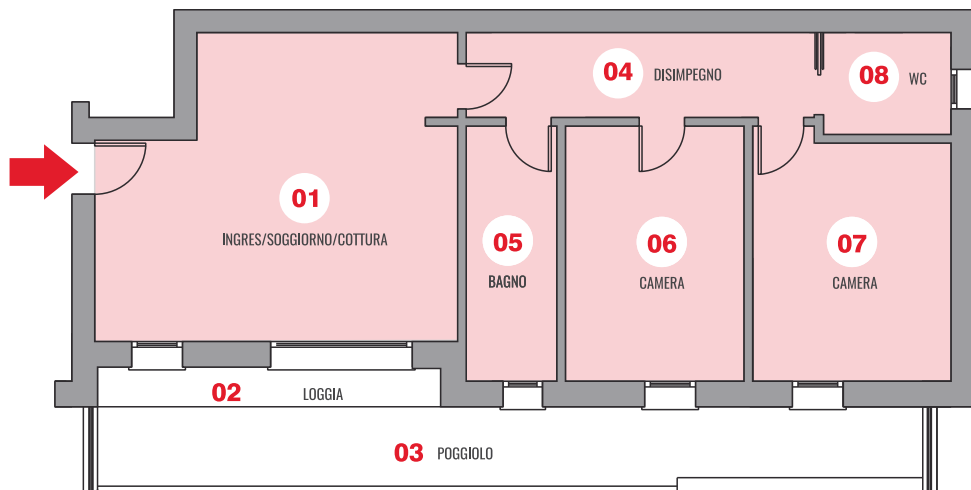


APPARTAMENTO F PIANO PRIMO



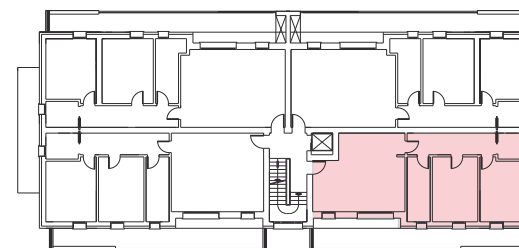
nord

est

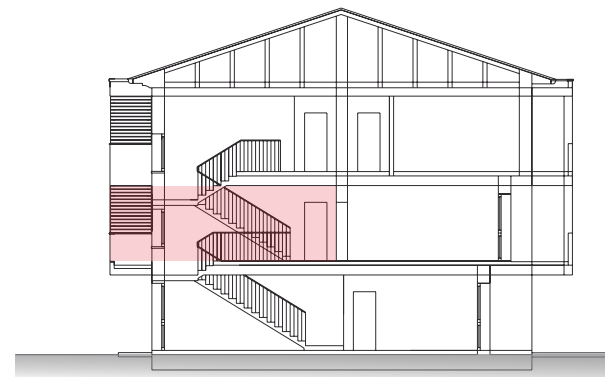
LEGENDA

01 INGRES/SOGGIORNO/COTTURA	mq 31,37
02 LOGGIA	mq 04,23
03 POGGIOLO	mq 20,72
04 DISIMPEGNO	mq 09,22
05 BAGNO	mq 07,20
06 CAMERA	mq 14,17
07 CAMERA	mq 15,03
08 WC	mq 04,05

AUTORIMESSA AL P. TERRA	mq 18,28
PARCHEGGIO ESCLUSIVO SUP. COMMERCIALE	mq 12,00
	mq 119,57



PIANO PRIMO



CLASSE ENERGETICA



UBICAZIONE

VIA G.CARDUCCI VILLAFRANCA P.NA (PD)

