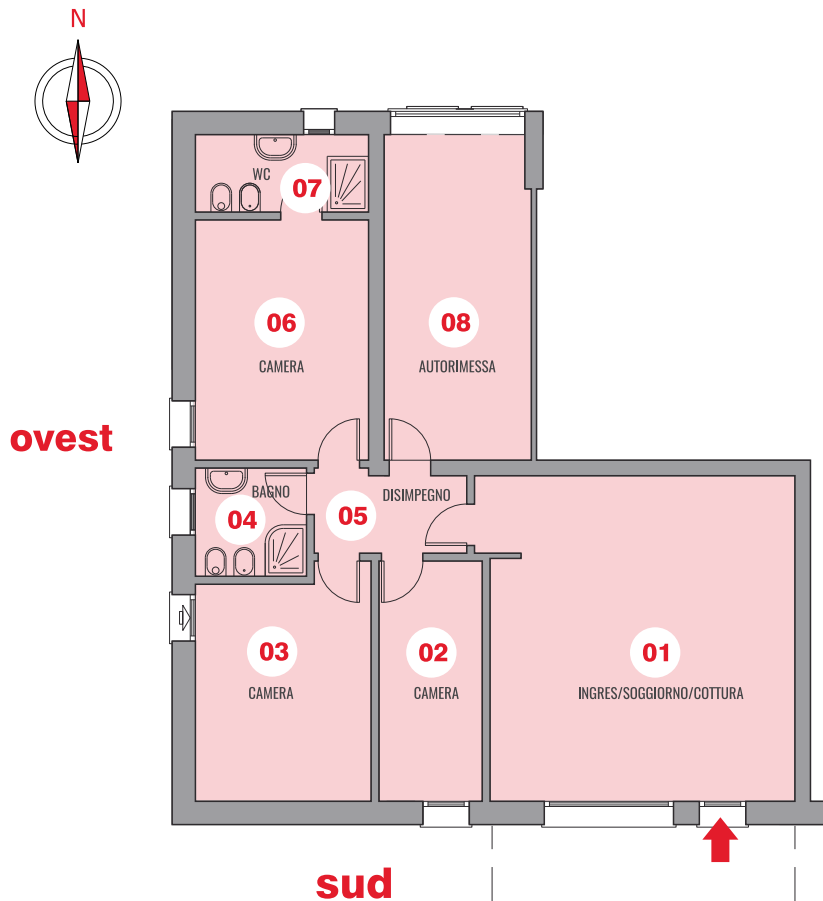


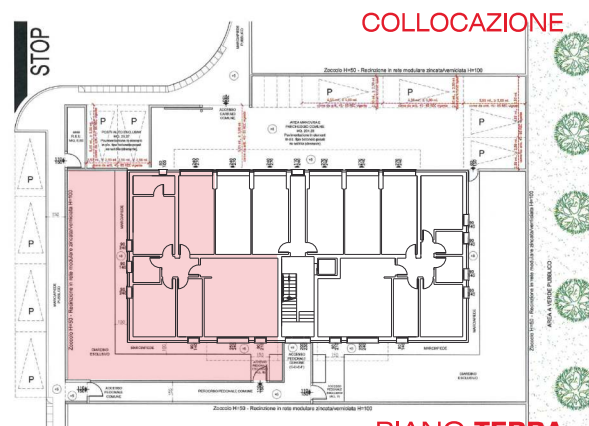
APPARTAMENTO B PIANO TERRA



LEGENDA

01 INGRES/SOGGIORNO/COTTURA	mq 33,44
02 CAMERA	mq 11,39
03 CAMERA	mq 15,22
04 BAGNO	mq 04,62
05 DISIMPEGNO	mq 04,88
06 CAMERA	mq 15,58
07 WC	mq 05,03
08 AUTORIMESSA	mq 18,27

SUP. COMMERCIALE	mq 130,72
PARCHEGGIO ESCLUSIVO	mq 12,00
GIARDINO ESCLUSIVO	mq 124,07



PIANO TERRA

CLASSE ENERGETICA



UBICAZIONE

VIA PIETRO BOTTAZZO MESTRINO (PD)

