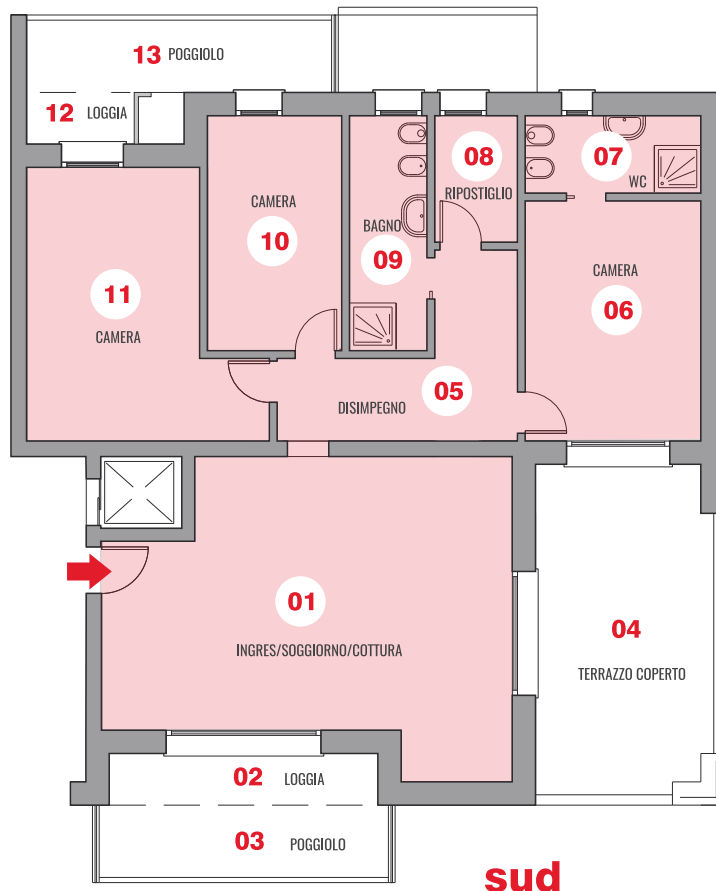


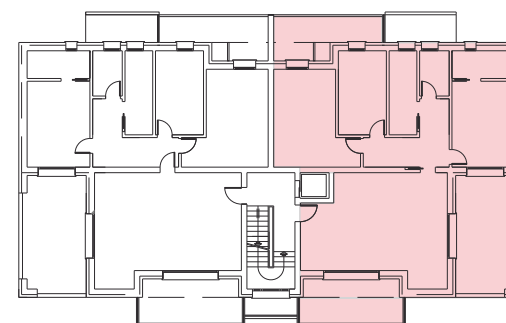
APPARTAMENTO C PIANO PRIMO



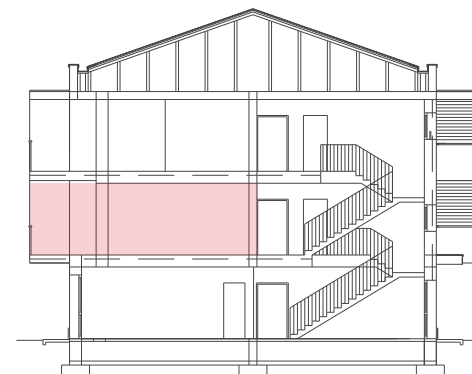
LEGENDA

01 INGRES/SOGGIORNO/COTTURA	mq 41,33
02 LOGGIA	mq 05,20
03 POGGIOLO	mq 07,84
04 TERRAZZO COPERTO	mq 21,44
05 DISIMPEGNO	mq 10,80
06 CAMERA	mq 15,81
07 WC	mq 05,10
08 RIPOSTIGLIO	mq 03,92
09 BAGNO	mq 06,83
10 CAMERA	mq 11,83
11 CAMERA	mq 19,92
12 LOGGIA	mq 03,05
13 POGGIOLO	mq 07,91
AUTORIMESSA AL P. TERRA	mq 18,60
PARCHEGGIO ESCLUSIVO	mq 12,00
SUP. COMMERCIALE	mq 169,48

COLLOCAZIONE



PIANO PRIMO



CLASSE ENERGETICA



UBICAZIONE

VIA PIETRO BOTTAZZO MESTRINO (PD)

