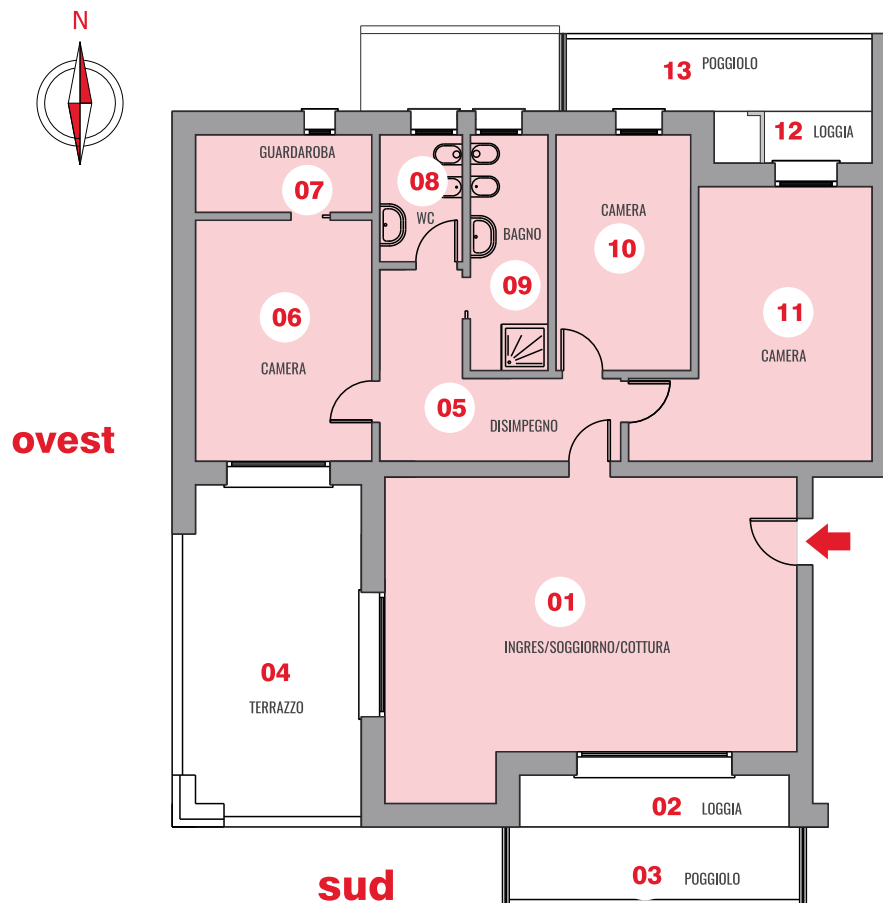


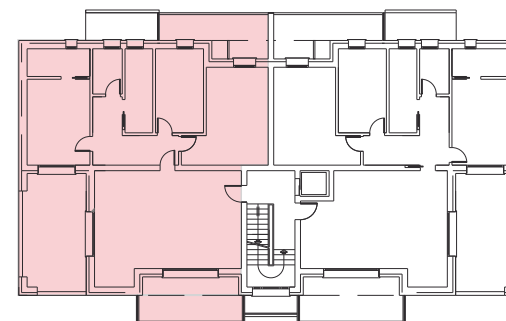
APPARTAMENTO F PIANO SECONDO



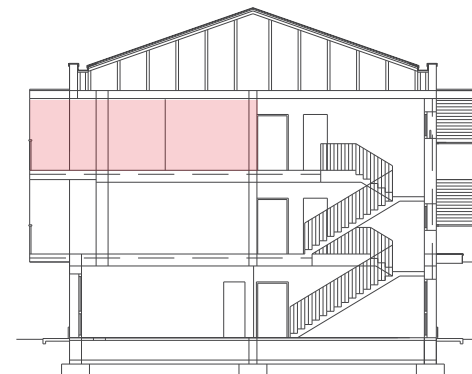
LEGENDA

01 INGRES/SOGGIORNO/COTTURA	mq 44,29
02 LOGGIA	mq 05,20
03 POGGIOLO	mq 07,84
04 TERRAZZO	mq 21,84
05 DISIMPEGNO	mq 10,43
06 CAMERA	mq 15,58
07 GUARDAROBA	mq 05,03
08 WC	mq 03,68
09 BAGNO	mq 06,83
10 CAMERA	mq 11,83
11 CAMERA	mq 19,92
12 LOGGIA	mq 03,05
13 POGGIOLO	mq 07,91
AUTORIMESSA AL P. TERRA	mq 18,86
PARCHEGGIO ESCLUSIVO SUP. COMMERCIALE	mq 12,00
	mq 170,81

COLLOCAZIONE



PIANO SECONDO



CLASSE ENERGETICA



UBICAZIONE

VIA PIETRO BOTTAZZO MESTRINO (PD)

